

Model **EF**



Rated at 14,000 lbs. Gross Vehicle Weight

*S/715*

*Performance Counts!*

**AUTOLIT**

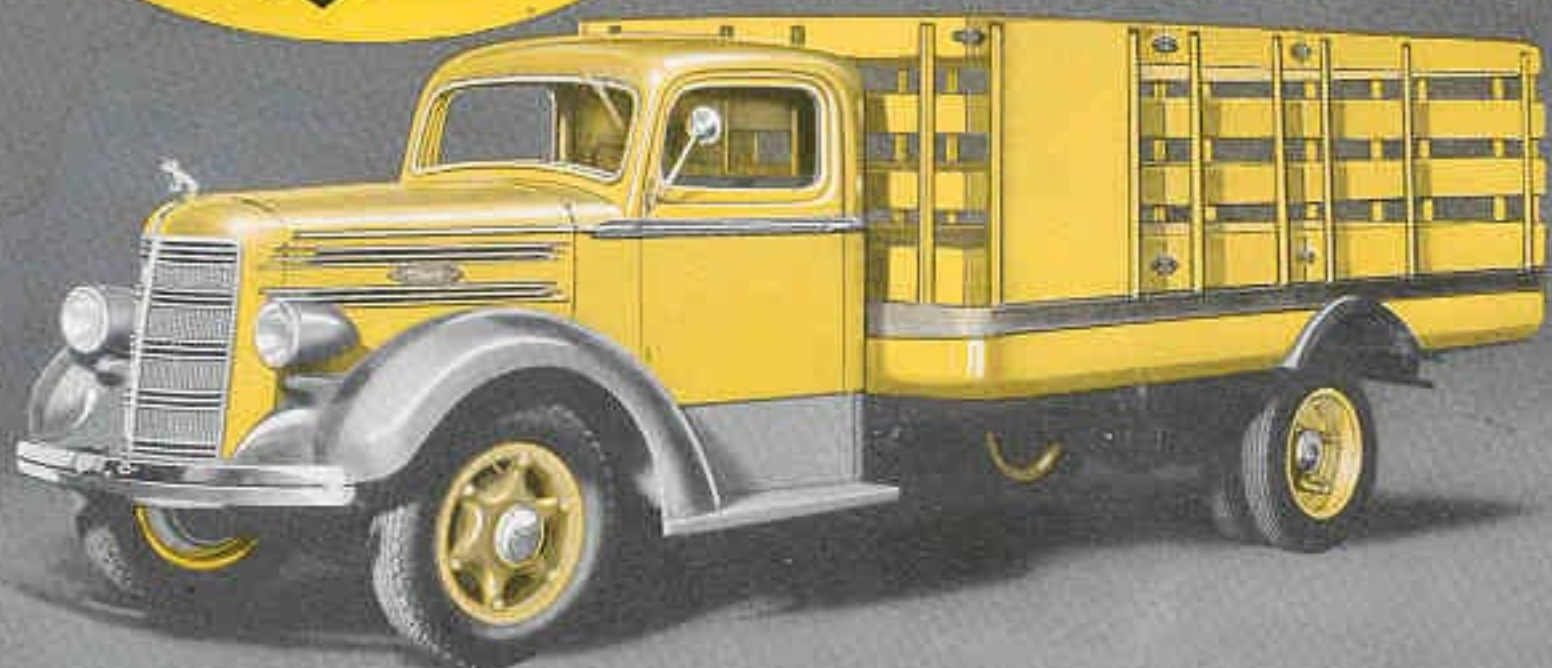


Automobile - Truck - Motorcycle 1900 to Present  
ORIGINAL Sales Brochures, Manuals, Books, Posters,  
Catalogs, and MUCH More. World's largest selection!



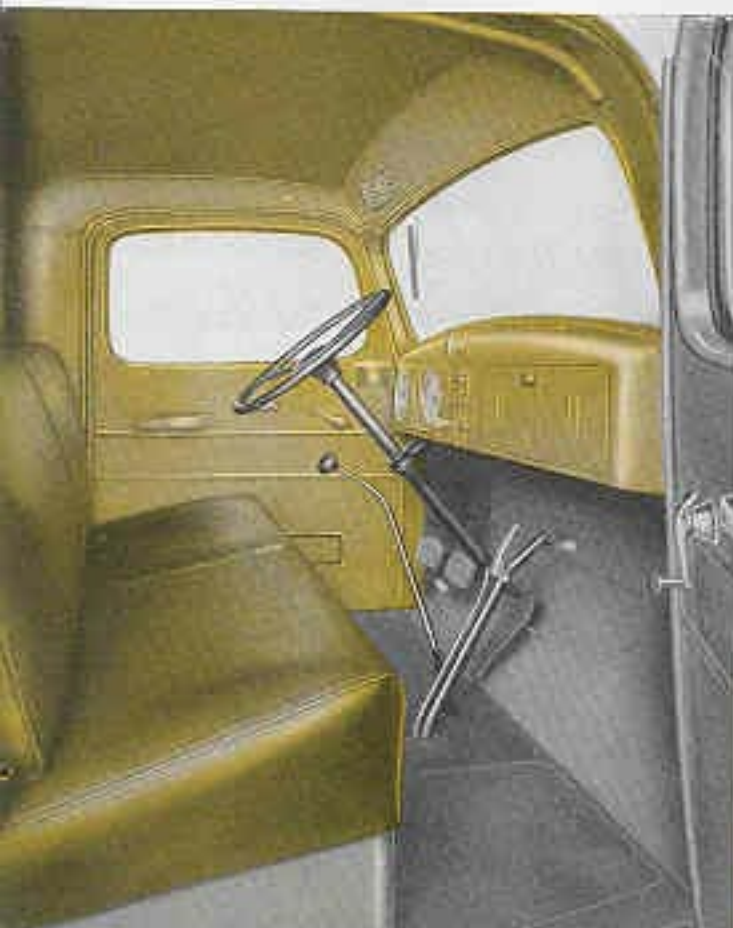
# Mack

# STAMINA



Longer life, less time out for repairs, slower depreciation, greater dependability—you naturally expect these benefits from a Mack. Inside and out, Model EF is built to live up to your every expectation of what a real truck should be.

*Backed*  
Because  
trucks ne  
pairs do  
of direct  
ers all c  
ing, mo



Mack-built, the deluxe EF cab provides the utmost in comfort, safety and durability. It is of all-metal construction, cushion-mounted, fully lined and insulated, with ample headroom and legroom. Fittings include deeply upholstered seats, dome light and clock-type instruments.

Smart, modern design, yet with no sacrifice of sturdy truck appearance, characterizes the treatment of hood and radiator

## AUTOLIT



Automobile - Truck - Motorcycle 1900 to Present  
ORIGINAL Sales Brochures, Manuals, Books, Posters,  
Catalogs, and MUCH More. World's largest selection!



# Now Available in a Light-Capacity Truck

BACKED by 38 years' experience in building trucks of unrivalled quality, Model EF offers ruggedness and stamina never before achieved in a light-capacity truck. In every detail of construction, this new Mack is built worthy of the greatest name in trucking.

Model EF is built to carry its full rated capacity without strain under the severest operating conditions. All components are designed to work in balanced co-ordination for maximum operating efficiency. A 271 cu. in. engine, one of the most sturdy and economical in its class, powers this new Mack. Among its features are chrome-nickel cylinder block . . . drop-forged, counterbalanced crankshaft with seven main bearings . . . directed water circulation to exhaust valves . . . timing drive by gears . . . exhaust valve seat inserts . . . packingless water pump . . . vaporizer with seasonal adjustment.

Drive is through a rugged, four-speed transmission with case-hardened, heat-treated gears. A five-speed transmission is available at a slight extra charge. In keeping with Mack's policy of extra strength throughout, this transmission is of a size customarily used on larger trucks. Single-reduction axle is full-floating with the load carried entirely by the extra-strong pressed steel housing. Double reduction axle is optional at extra cost.

Four wheel hydraulic brakes, fully inclosed and protected, have total area of 325 inches, and are vacuum-booster-actuated. Structural strength is assured by deep-section frame of highest grade carbon steel strongly braced with heavy cross members, three being of box-girder type. Springs of generous size are mounted in Mack rubber Shock Insulators.

This exclusive feature cushions the body and load against vibration and road shocks and eliminates all need for lubrication at spring ends.

## Mack Nation-Wide Service

Their mechanical excellence Mack and a minimum of service. When repairs become necessary Mack's network of factory branches, and leading dealers the country assure you time-saving satisfaction.

The up-to-the-minute styling of this new Mack makes it an impressive rolling advertisement for your business wherever it goes. There's business-building prestige in associating your name with a top-quality product.



**AUTOLIT**



Automobile - Truck - Motorcycle 1900 to Present  
ORIGINAL Sales Brochures, Manuals, Books, Posters,  
Catalogs, and MUCH More. World's largest selection!



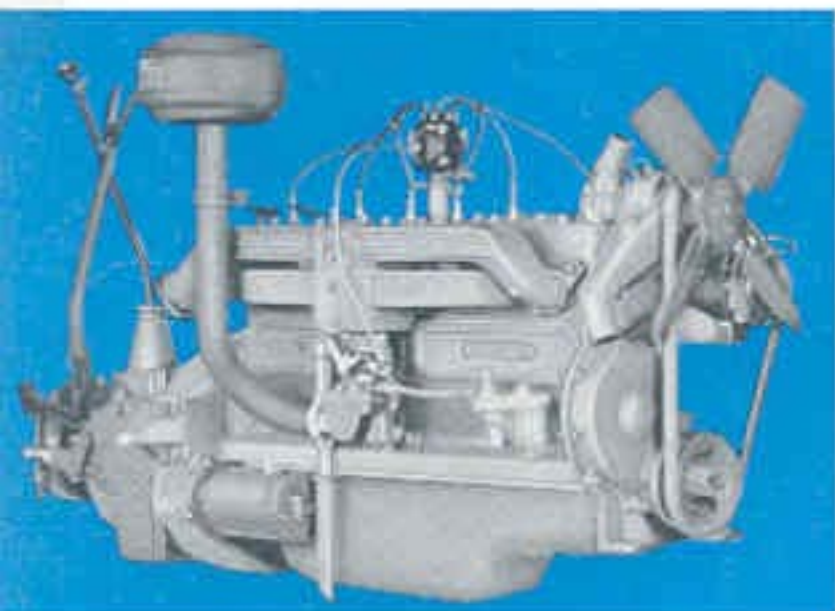
# MODEL EF SPECIFICATIONS

**WHEELBASE:** Standard . . . 132½"  
Special . . . 156½", 174½" and 192½"

**TRACK:** Front 65½"; Rear 65"

**TIRES:** Standard, Front . . . 6.00-20  
Rear . . . 6.00-20 Dual  
(Larger sizes available at extra charge)

**TURNING CIRCLE:** 50' for 132½" w.b.;  
55' for 156½" w.b.



**ENGINE:** Six-cylinder  
Bore and Stroke, 3½" x 4¾"  
Piston Displacement, 271 cu. in.  
Horsepower, 78 @ 2800 r.p.m.  
Torque, 178 ft.-lbs. @ 1000 r.p.m.  
Cylinders, cast in block with detachable one-piece head  
Valves, L-head with exhaust valve seat inserts  
Pistons, aluminum alloy  
Crankshaft, seven-bearing, drop-forged, heat-treated carbon steel, counterbalanced  
Fuel Feed, fuel pump, 21-gallon gasoline tank mounted under cab seat  
Air Cleaner, oil bath type  
Vaporizer, exhaust jacketed riser with seasonal adjustment  
Lubrication, full pressure, oil filter  
Cooling, centrifugal pump  
Thermostat, water outlet  
Radiator, continuous finned tubular  
Water capacity, 7 gallons

**CLUTCH:** Dry, single plate, 11" diameter

**TRANSMISSION:** Four-speed, selective; unit with engine  
Ratios: fourth, direct; third, 1.69; second, 3.09; first, 5.90;  
reverse, 7.21

**UNIVERSAL JOINTS:** Needle-bearing type

**REAR AXLE:** Single-reduction, full-floating  
Ratios, Standard, 4.85, 5.83 or 6.80

**BRAKES:** Foot, four wheel, internal, hydraulic, vacuum-booster actuated  
Size, front, 14" x 2"; rear, 16" x 3½", area, four wheels, 325 square inches  
Hand, contracting, rear of transmission  
Size, 8" x 2½"; area, 59 square inches  
Total Braking Area, 384 square inches

**FRAME:** Side members, pressed carbon steel; 7½" x 3" x ½"  
Cross-members, three box-girder type, one channel

**STEERING GEAR:** Cam and lever, ratio, 17.14 to 1

**SPRINGS:** Front, 42" x 2½"; Rear, 51" x 2½"; Halper, 34½" x 2½"  
Suspension, Mock rubber Shock Insulators

**WHEELS:** Cast-spoke with demountable rims

**STANDARD EQUIPMENT:** Painting in lead varnish, coat (no wax), floor boards, running boards and aprons, 6.00-20 balloon tires, single front and dual rear, mounted on cast-spoke wheels, front bumper, four-wheel hydraulic brakes with vacuum booster, speedometer, thermostat control, engine temperature indicator on instrument board, air filter, air cleaner, battery ignition, electric starting and lighting system including headlamps, combination stop and tail light, and electric horn.

**STANDARD CHASSIS EXTRAS:** Cab complete with mooring, windshield wiper, demoght and rear view mirror, five-speed transmission, double reduction rear axle, radiator shutters, shock absorbers.

There being no annual or series models of MACK products, refinements and improvements are effected whenever sound development and thorough trial prove them to be advantageous. The right is therefore reserved to change specifications or prices without notice.



**MACK TRUCKS, Inc.**  
New York, N. Y.

**AUTOLIT**



Automobile - Truck - Motorcycle 1900 to Present  
ORIGINAL Sales Brochures, Manuals, Books, Posters,  
Catalogs, and MUCH More. World's largest selection!