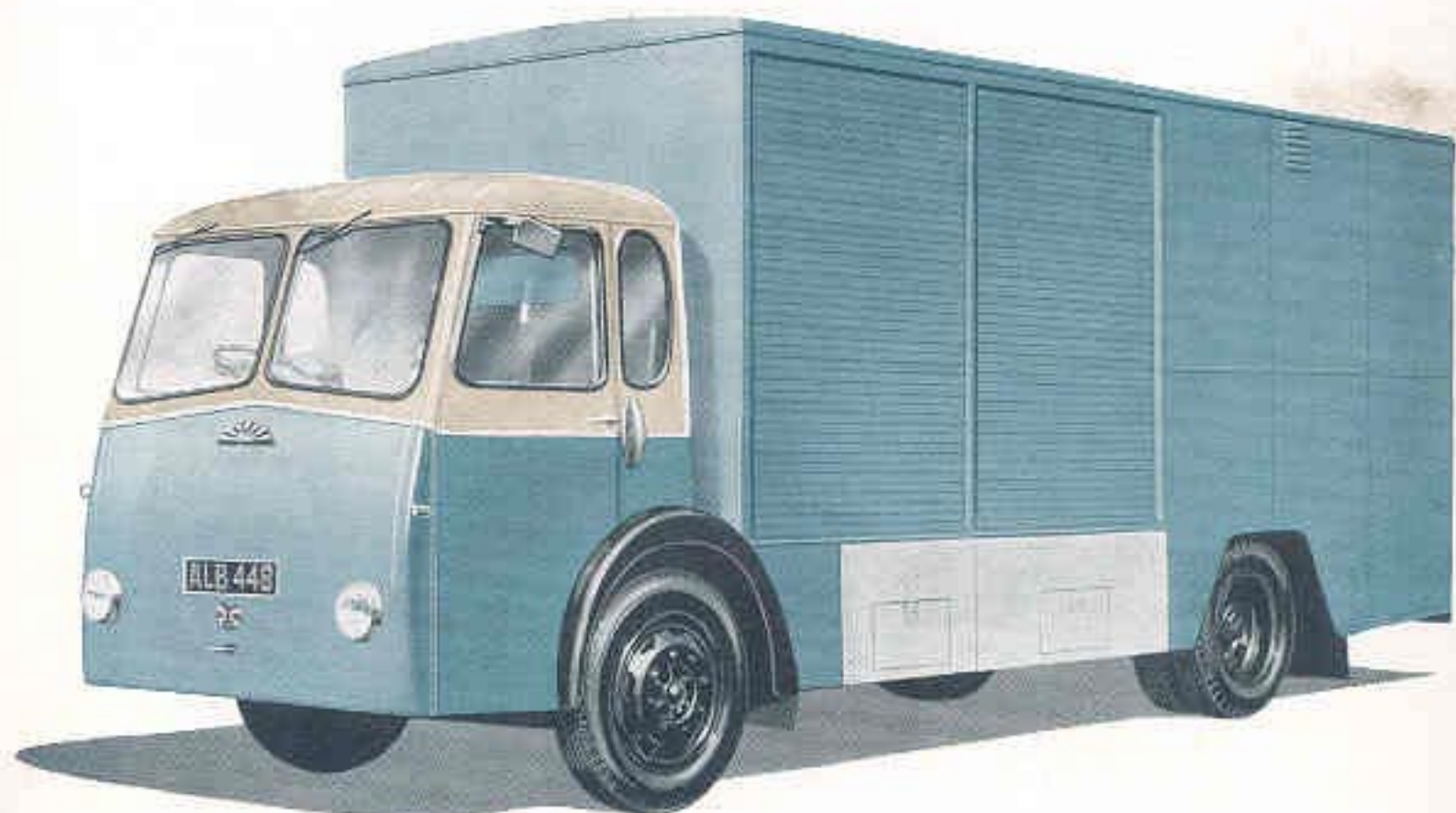


# Albion

## CLAYMORE



3-man cab with extra low step-in

**4 and 5 tonners**

**Underfloor diesel  
delivery vehicles  
with 5 or 6  
speed gearbox**

**AUTOLIT**



Automobile - Truck - Motorcycle 1900 to Present  
ORIGINAL Sales Brochures, Manuals, Books, Posters,  
Catalogs, and MUCH More. World's largest selection!

Underfloor engine layout  
allows a wide variety of  
bodies to suit all trades

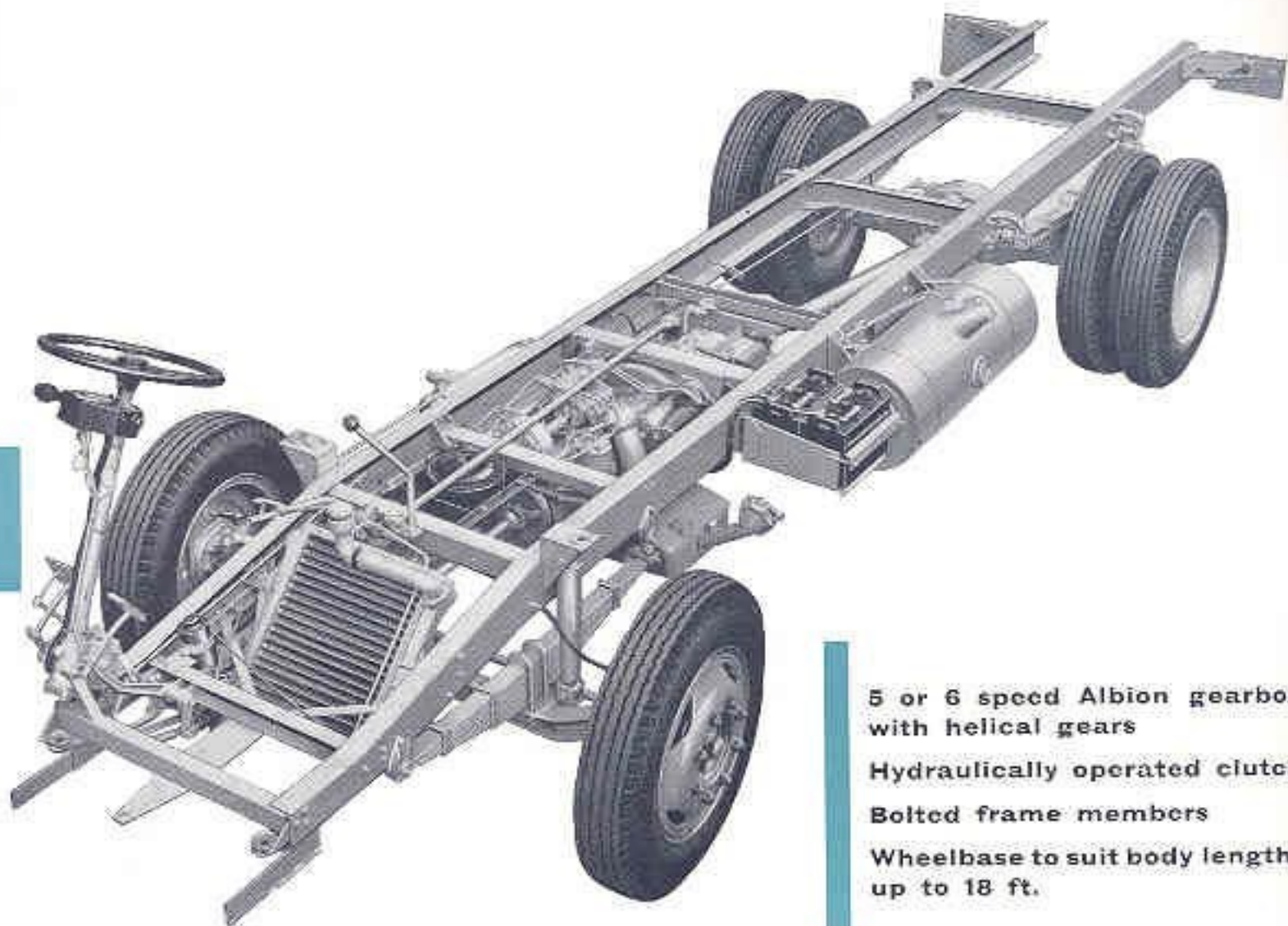


**AUTOLIT**



Automobile - Truck - Motorcycle 1900 to Present  
ORIGINAL Sales Brochures, Manuals, Books, Posters,  
Catalogs, and MUCH More. World's largest selection!

**Ideal delivery vehicles with 70 h.p. underfloor diesel giving real economy**



**5 or 6 speed Albion gearbox with helical gears**

**Hydraulically operated clutch**

**Bolted frame members**

**Wheelbase to suit body lengths up to 18 ft.**



### **Roomy 3-man cab with clear floor**

An all-steel cab of up-to-the-minute design, with many time-saving features, is available for the Claymore. The full-forward cab has a low floor line which is quite clear and free from obstruction owing to the engine being mounted below the chassis amidships. The driver can, therefore, enter or leave the vehicle easily from either side. There's room for three men in the cab—to handle bulky or heavy deliveries. And a great time-saving feature—the easy access to the cab—one step from the kerb and you're in. Cab comfort and good all-round visibility imparts confidence to the driver and ensures easier and safer operation.



**AUTOLIT**



Automobile - Truck - Motorcycle 1900 to Present  
ORIGINAL Sales Brochures, Manuals, Books, Posters,  
Catalogs, and MUCH More. World's largest selection!